

# Welcome to Nursery at IVIA

## Meet the School Senior Team



Mrs Wright  
Principal  
DSL



Mrs Constantinescu  
Vice Principal  
KS1 Lead



Miss Sibley  
SEND Coordinator  
EYFS Lead



# Safeguarding team



**Kelly Wright**  
**Designated**  
**Safeguarding Lead**



**Corina Constantinescu**  
**Deputy Designated**  
**Safeguarding Lead**



**Kate Sibley**  
**Deputy Designated**  
**Safeguarding Lead**



**Rhonda Swift**  
**Deputy Designated**  
**Safeguarding Lead**

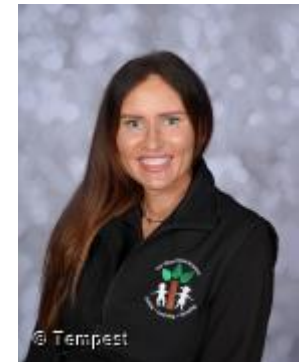
# Nursery Acorn Class



Teacher – Miss Stanbridge



Support Staff – Mrs Moore  
Miss Eley  
Miss Barrance



# School day timings

Start of the Day - The Main door opens 8.45am for a soft start. It will be closed at 9.00am.

For AM children the morning session finishes at 11.45am.

End of the Day - The door will open at 3pm and will close at 3.10. Any child not collected by then will be taken care of until they are picked up or alternative provision is made. Please be aware there may be charges for regular late collection of children.

It is really important that your children are on time and do not miss out of crucial learning. Every second counts!

## **School Uniform**

Burgundy school jumper

White polo shirt

Grey trouser/skirt/shorts

Blue checked summer dress

Black school shoes

This is not compulsory for nursery, we do ask if you can try and send the children in older clothes that you don't mind getting dirty.

Children to come in wearing their PE kit on their allocated PE day.

Due to health and safety, **NO JEWELLERY** to be worn on PE days. If ears are pierced, only one pair of **PLAIN STUDS** may be worn.

All jewellery must be removed for PE. If you are unable to remove certain items, you must cover it/them with either a sweatband or tape which you must provide.

## **Muddy puddles**

Waterproofs to cover clothing.

Wellies

**PE days are Tuesday and Friday**

**AM**

**Muddy puddles: Friday AM**

# What does your child's day look like?

	8.45-9.30	9.30-10	9.55-10.45	11:00 – 12:00		1-1.15	1.15-2.15	2.15 -2.50	2.50-3.00
<b>Monday</b>	Soft Start	Phonics	Independent Learning / Library	English	L U N C H	UTW	Independent Learning	Circle Time News	Story Home
<b>Tuesday</b>	Soft Start	PE Sports	English and Independent Learning	Math		Dough Disco	Independent Learning	Yoga Mindfulness	Story Home
<b>Wednesday</b>	Soft Start	Phonics	Independent Learning	Math		Library	Independent Learning	Squiggle Wiggle	Story Home
<b>Thursday</b>	Soft Start	Phonics	Independent Learning	Math		UTW	Independent Learning	PSHE/SAFE Circle Time	Story Home
<b>Friday</b>	Soft Start	PE Sports	Muddy Puddles	English		Dough Disco	Independent Learning	Loud and Proud	Story Home

# What will your child be learning this year?

<u>Autumn 1</u>  <b>Wonderful me!</b> Gingerbread man	<u>Spring 1</u>  <b>Space</b> Whatever next Aliens love underpants	<u>Summer 1</u>  <b>Toys</b> Kippers toy box The magic toy box
<u>Autumn 2</u>  <b>Light and dark</b> Owl babies Night monkey, Day monkey	<u>Spring 2</u>  <b>Changes</b> Hungry Caterpillar Oi Frog	<u>Summer 2</u>  <b>Transport</b> The train ride 10 Little pirates

# Homework



Every week we will upload a memo to Tapestry with a little task. please have a try at doing these with your children, and upload your pictures as an observation.

**All** children are sent home with a weekly library book, it would be great if you can find the time to read it with them and we would love to see pictures and videos of this on Tapestry.

**Reading supports children to...**

Develop better mental wellbeing, social skills and strong relationships

Meet speech and language milestones and do better at school

Develop imagination, empathy and creativity

**Children who are supported to complete their homework regularly will make good progress.**

# Working together

- ▶ Building an open, supportive partnership between teachers and parents is key to children making good progress and fulfilling their potential. Research shows that,
  - ▶ Levels improve
  - ▶ Confidence rises
  - ▶ Children's attitudes toward school improve
  - ▶ Children complete more homework
  - ▶ Children attend school regularly



When we all work together to improve outcomes for

**ALL CHILDREN**

# Support For SEND

All children learn at different rates and in different styles. For most, they can manage this within the classroom day to day. Some children may require extra support in order to achieve. We have specially trained staff lead by Miss Sibley, SENDCO and the SLT team who will work with class teachers to assess the needs of everyone.

Each children is different - some may require differentiated work within the class, perhaps supported by an adult. At times, it may be beneficial for children to work in a smaller environment, supported by a higher child to adult ratio. We have two specifically designed classrooms to nurture and support children who may need extra support.

You will be kept informed of your child's progress and the provision that is provided for them. Please see our SEN policy for further information.



Department  
for Education



Department  
of Health

## **Special educational needs and disability code of practice: 0 to 25 years**

**Statutory guidance for organisations  
which work with and support children  
and young people who have special  
educational needs or disabilities**

# Attendance



**Please be aware of the Attendance policy which is published on the school website.**

As a parent or carer, you are legally responsible for ensuring that your child receives a full time education. Failure to do so could lead to fines or even a community or custodial sentence. We will systematically follow up any concerns about attendance working in partnership with Buckinghamshire Council. Our school will use Fixed Penalty Notices if necessary to improve attendance. Children will be rewarded for 100% attendance. Helping to create a pattern of regular attendance is everybody's responsibility - parents, pupils and all members of school staff. To help us all to focus on this we will:

- Give you details on attendance in our newsletters;
- Report to you regularly on how your child is performing in school, what their attendance and punctuality rate is and how this relates to their attainment
- Celebrate good attendance by displaying individual and class achievements
- Reward good or improving attendance through class rewards and certificates
- Where absence is causing the school concerns, parents will be informed in writing and in some cases asked to attend a meeting with the school's Attendance Officer and the school Principal.

[Attendance - a guide for parents](#) for further information

# Early Years Pupil Premium

If you are receiving any of the below, the school will receive additional funding for your child.

You can complete a Early years pupil premium form which is available from the school office. You must advise the school if there are any changes to the information you have provided on the form.

- Income Support
- Income Based Jobseeker Allowance (IBJSA)
- Employment & Support Allowance (Income Related) (ESA(IR))
- Support under part VI of the Immigration and Asylum Act 1999
- Child Tax Credit (TC602)- if you have a yearly income of less than £16,190 and do not get working tax credit
- The Guarantee element of State Pension Credit
- Universal Credit

# Feedback

If you have any questions, concerns or comments about any aspect of your child's education, please initially speak to your child's class teacher.



If you feel that you need to address these further, you can make an appointment to speak to Ms Logathas, Deputy Principal or Miss Sibley, SENDCO.

Some issues may need to be addressed by the Principal, Mrs Wright (Mrs Abell Mon-Tues/Miss Logathas Wed-Fri in Autumn 2024). Please be assured that we will work with you in the best interests of your child.

If there is a member of staff who you would like to positively recognise for their work, or an element of school life that you feel has been successful, and needs to be commended, please do complete a slip available from main reception.



**Thank you for your time.**

**QUESTIONS**

